

Recommended Trees

City Code (12.40)

Low Trees / Ornamental

For Boulevards with power lines
Trees 25'- 30' and under

(*Most salt and pollution tolerant)

- Hot Wings or Tatarian Maple
- Crabapples (Fire Blight resistant)
- Hawthorn Species*
- Pagoda Dogwood
- Princess Kay Plum
- Amur Chokecherry
- Tree Lilac, Ivory Silk or Japanese
- Oakleaf Mt. Ash* (fire blight resistant)
- Red Bud
- Magnolia

Shade Trees

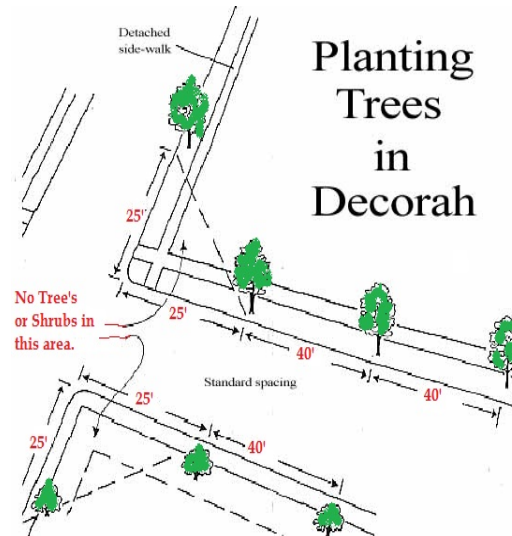
For Boulevards without power lines
Trees 30' Taller

(*Most salt and pollution tolerant)

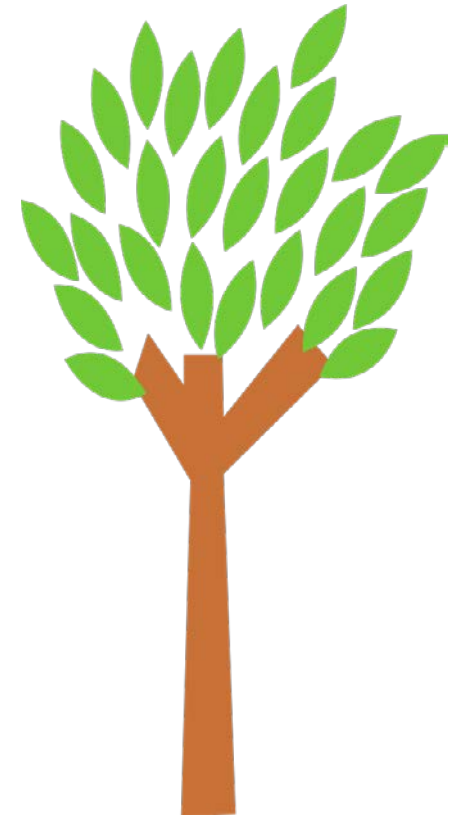
- River Birch
- White Oak and Swamp White Oak
- Aspen
- Red Oak Species
- Honey Locust*
- Linden
- Kentucky Coffee Tree*
- Elm* (resistant varieties)
- Ginko
- Hackberry*
- Chinkapin Oak (not highly cultivated)

Duties of Property Owner now that
you have planted a tree.

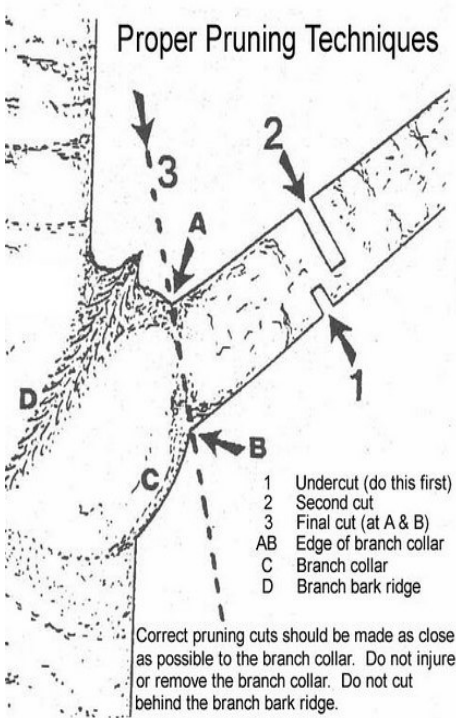
(Decorah City Code 12.40)



- Obtain a permit from the City Forester before removing or treating a tree on the right-of-way.
- Trim trees to a minimum clearance of 8' over sidewalks and 14' over streets.
- Avoid planting trees and shrubs within 25' of an intersection, 4' of an alley, or 6' of a driveway.
- Plant trees at least 40' apart on right-of-way.
- Maintain the health of trees so they do not constitute a hazard to other trees, vehicles, pedestrians, or property.
- Loose leaves may **ONLY** be raked into street from October 1 - November 15.



Planting Trees in Decorah



Who to Call

Decorah City Forester –
Robin Sailor (563-277-5153)
cityforester@decorahia.org

Street Commissioner –
Kevin Nelson (563-382-2157)
citystreets@decorahia.org

IOWA ONE CALL
(1-800-292-8989)

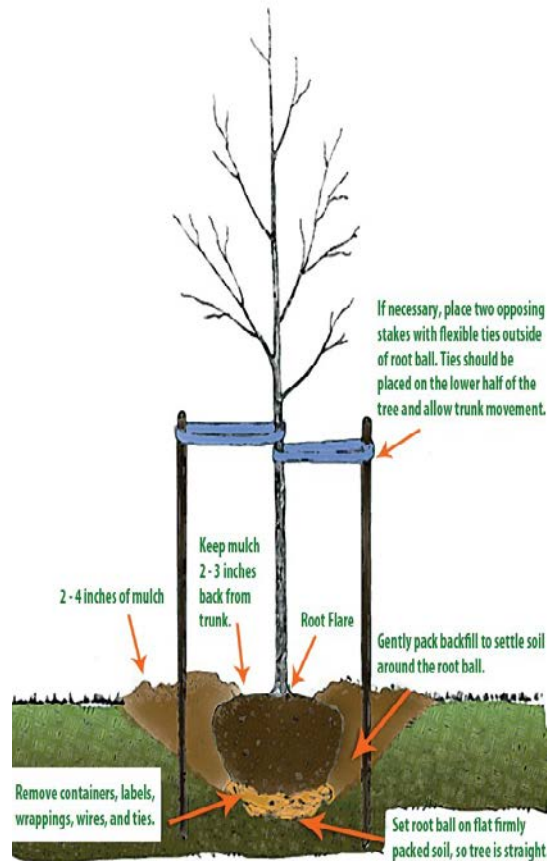
Decorah Tree Board
www.decorahia.org



Planting Trees Decorah
[P.O Box 138, 400 Claiborne]
[Decorah, IA 52101]

Planting Tree Checklist

- **Obtain permit.** Contact your City Tree Forester to ensure all City Codes are followed.
- **Research options.** Decide what species, size, and location works for your property
- **Be sure it's safe to dig.** Call Iowa One Call ([1-800-292-8989](tel:1-800-292-8989)) – it's the law.
- **Plant new tree.** Follow tree diagram to plant at proper depth.
- **Follow up with tree health.** Water, stake, and prune to ensure the long life of tree.



Decorah Boulevard Tree Voucher

The City of Decorah in association with the Decorah Tree Board offers assistance with the planting of trees along the City of Decorah boulevards subject to the following.

1. Must be approved by the City Forester before planting a tree on the right-of-way. Robin Sailor (563-277-5153)
2. Pick only species on the recommended boulevard tree list.
3. Follow the proper planting checklist to ensure healthy tree.

The City of Decorah will contribute **\$60.00** per tree (limit two tree per property per year).

Name _____

Address _____

Phone _____

Approved by _____

Tree Forester (563-277-5153)
cityforester@decorahia.org

Redeem Voucher at one of the following participating nurseries:

1. Ladybug Landscapes, 904 Mechanic St., (563)-387-0217
2. Henzlers Garden Shop, 1812 State Hwy 9, (563)-382-5545
3. Pinter's Gardens & Pumpkins, 2475 IA-9, (563)-382-0010
4. Fisk Farm and Home, 915 short street (563)-382-8822