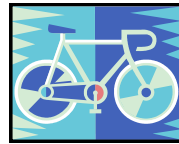


CITY OF DECORAH

The City of Decorah has much to offer the cycling enthusiast; from paved trails to challenging off road trails. Please visit the City of Decorah website so that you can take full advantage of all that we have to offer. Decorah also has specific laws pertaining to cyclists. Those laws are in place for the safety of all. We ask that you follow the laws and remain courteous to others.

- **No riding bicycles on the sidewalk in the commercial district (the downtown area).**
- Decorah residents shall have their bikes registered and licensed (available at the Police Dept. for \$2.00 . The license is non-expiring).
- When riding on the sidewalk outside of the commercial district; yield the right of way to pedestrians.



Be a good bicyclist, ride with;

- Caution.
- Good Judgment.
- Courtesy and care.

DECORAH POLICE DEPARTMENT

400 Claiborne Drive
Decorah
Iowa
52101
Telephone 563-382-3667
Fax 563-382-2042
E-mail: www.decorahia.org

**DECORAH POLICE
DEPARTMENT**



SAFE BICYCLING IN DECORAH



**Decorah Police
563-382-3667
For emergency
dial 911**

SAFE BICYCLING IN DECORAH

KNOW THE LAWS AFFECTING BICYCLES

Under Iowa law, bicyclists must generally comply with the same rules of the road as drivers of motor vehicles.

Bicyclists using the roadways are required to obey all traffic signs, signals and roadway markings.

If you ride at night, Iowa law requires that your bike be equipped with a white light on the front and a red light or reflector on the back, both of which must be visible for at least 300 feet.



No bicycle may be equipped with a siren or whistle.

Know and obey the rules of the road.

Helpful websites:

www.iowadot.gov/iowabikes

www.iowabicyclecoalition.org

SAFE BICYCLING TIPS

- Use bicycle paths, or ride single file on the right side of the roadway (travel with the flow of traffic).
- Watch out for parked cars pulling into traffic, or car doors opening into your path.



- Obey all traffic signs, signals and road markings.

- Use proper hand signals whenever you turn, change lanes or stop.

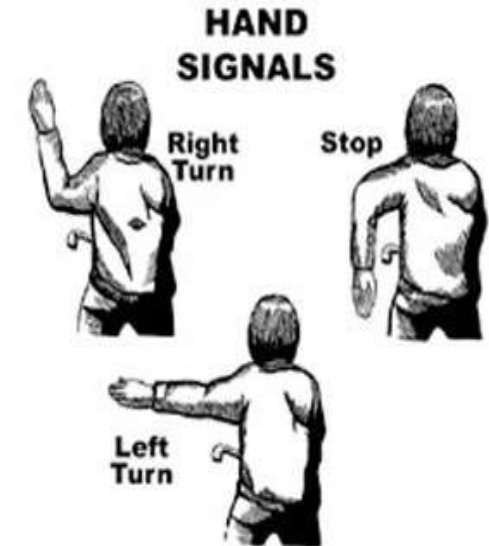
- Use caution at intersections.

Watch for cars turning across your path—and be prepared to stop.

- Yield to automobiles and pedestrians.
- Dismount and walk your bike across busy streets.
- Wear light or brightly colored clothing to make yourself more visible to motorists.
- Keep your bike in good condition by performing regular maintenance.
- **Wear a helmet.**
- Use your voice, horn, or bell; to warn others before overtaking and passing.
- Use a rear view mirror to check traffic behind you.
- Ride predictably—avoid sudden unexpected movements.

HAND SIGNALS

All bicyclists should know and use proper hand signals, in order to advise other vehicle operators of their intention to turn, change lanes or stop.



DECORAH POLICE DEPARTMENT

